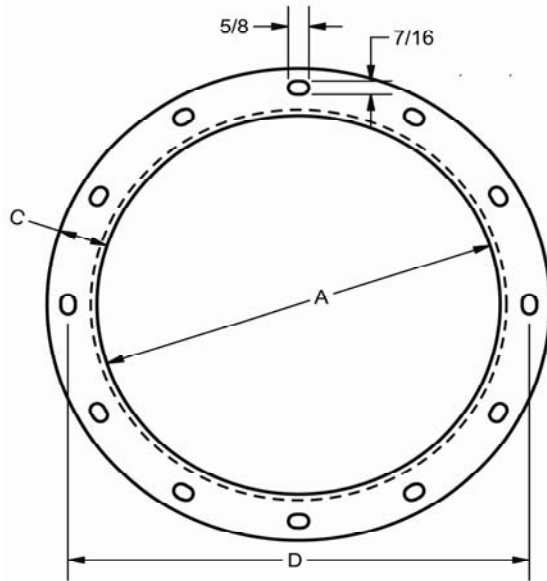
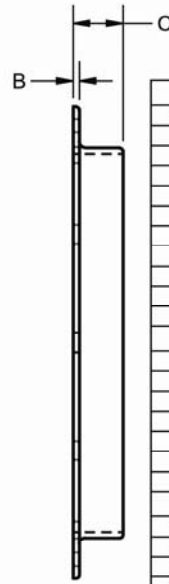


DIMENSIONS AND SPECIFICATIONS

ANGLE RINGS



A - I.D. OF FLANGE
 B - THICKNESS
 C - WIDTH
 D - BOLT CIRCLE
 E - NUMBER OF HOLES



ALL UNITS IN INCHES

STANDARD ANGLE FLANGE RINGS						
SIZE	A	B	C	D	E	WEIGHT
6	6 1/16	1/8	1 1/4	7 1/2	6	1.75
8	8 1/16	3/16	1 1/4	9 1/2	8	2.5
10	10 1/16	3/16	1 1/4	11 1/2	8	3
12	12 1/16	3/16	1 1/2	13 13/16	12	6
14	14 1/8	3/16	1 1/2	15 13/16	12	7
16	16 1/8	3/16	1 3/4	18 1/8	16	9.5
18	18 1/8	3/16	1 3/4	20 1/8	16	10.5
20	20 1/8	3/16	1 3/4	22 1/8	20	11.5
22	22 1/8	3/16	1 3/4	24 1/8	20	12.7
24	24 1/8	3/16	1 3/4	26 1/8	20	14

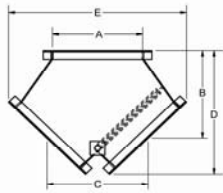
LIGHT ANGLE FLANGE RINGS						
SIZE	A	B	C	D	E	WEIGHT
8	8 1/16	1/8	1 1/4	9 1/2	8	2.25
10	10 1/16	1/8	1 1/4	11 1/2	8	2.75
16	16 1/8	3/16	1 1/2	18 1/8	16	8
18	18 1/8	3/16	1 1/2	20 1/8	16	9
20	20 1/8	3/16	1 1/2	22 1/8	20	9.5
22	22 1/8	3/16	1 1/2	24 1/8	20	10.5
24	24 1/8	3/16	1 1/2	26 1/8	20	11.5

PIPE SIZE ANGLE FLANGE RINGS						
PIPE SIZE	A	B	C	D	E	WEIGHT
6 5/8	6 3/4	1/8	1 1/4	8 1/4	6	2
8 5/8	8 3/4	3/16	1 1/4	10	8	2.5
10 3/4	10 7/8	3/16	1 1/2	12 5/8	8	5.25
12 3/4	12 7/8	3/16	1 1/2	14 5/8	12	6.15

NOTE:

1. ODD SIZE I.D. AVAILABLE UPON REQUEST.
2. SPECIAL HOLE SIZES AND SPACING AVAILABLE UPON REQUEST.

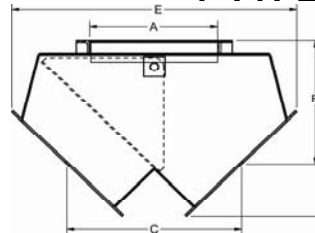
Y-TYPE DIVERTER VALVES



ALL UNITS IN INCHES					
SIZE	A	B	C	D	E
45°					
6	6 1/8	8 3/4	9 3/8	11 3/4	15 1/2
8	8 1/8	10	10 3/4	13 3/4	18 3/8
10	10 1/8	11 1/4	12 1/4	15 3/4	21 1/8
12	12 1/8	12 5/8	13 5/8	17 3/4	24
14	14 1/8	14 1/4	15 3/8	20 3/8	27 1/2
16	16 1/8	15 5/8	16 7/8	22 3/8	30 3/8
18	18 1/8	16 7/8	18 1/4	24 3/8	33 1/8
60°					
6	6 1/8	12 3/8	10 3/4	14 1/2	18 1/8
8	8 1/8	14 1/4	12 3/8	16 7/8	21 5/8
10	10 1/8	16	14 1/8	19 1/4	25 1/8
12	12 1/8	17 7/8	15 7/8	21 1/2	28 1/2
14	14 1/8	20 3/8	18	24 5/8	32 7/8
16	16 1/8	22 1/4	19 3/4	27	36 3/8
18	18 1/8	24	21 1/2	29 3/8	39 3/4

NOTE:
 1. STANDARD VALVES ARE 10GA.
 2. CUSTOM SIZES ARE AVAILABLE.

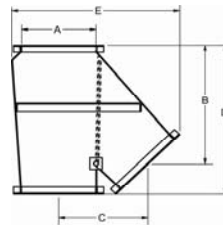
Y-TYPE PAN VALVES



ALL UNITS IN INCHES					
SIZE	A	B	C	D	E
45°					
6	6 1/8	7 7/8	8 7/8	10 7/8	16
8	8 1/8	9 3/8	12 1/8	13 1/8	19 5/8
10	10 1/8	10 3/4	14 1/4	15 1/4	23 1/8
12	12 1/8	12 1/4	16 3/8	17 1/2	26 3/4
60°					
6	6 1/8	10	8 5/8	12 1/8	16 1/8
8	8 1/8	11 7/8	10 5/8	14 5/8	19 3/4
10	10 1/8	13 7/8	12 1/2	17	23 1/2
12	12 1/8	15 3/4	14 1/2	19 1/2	27 1/8

NOTE:
 1. STANDARD VALVES ARE 10GA.

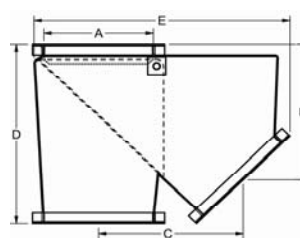
K-TYPE DIVERTER VALVES



ALL UNITS IN INCHES					
SIZE	A	B	C	D	E
45°					
6	6 1/8	14 1/2	9 3/8	17 1/2	17
8	8 1/8	16 5/8	11 1/8	20 3/8	20 1/2
10	10 1/8	18 5/8	12 3/4	23 1/8	23 7/8
12	12 1/8	20 3/4	14 1/2	25 7/8	27 1/4
14	14 1/8	23 1/2	16 5/8	29 5/8	31 1/4
16	16 1/8	25 5/8	18 3/8	32 3/8	34 3/4
18	18 1/8	27 3/4	20 1/8	35 1/4	38 1/8
60°					
6	6 1/8	23 3/8	10 1/8	25 1/2	18 3/4
8	8 1/8	26 3/4	12	29 1/2	22 1/2
10	10 1/8	30 1/4	13 3/4	33 1/2	26 1/4
12	12 1/8	33 3/4	15 5/8	37 3/8	29 7/8
14	14 1/8	38 3/8	18	42 5/8	34 3/8
16	16 1/8	41 3/4	19 7/8	46 5/8	38 1/8
18	18 1/8	45 1/4	21 3/4	50 5/8	41 7/8

NOTE:
 1. STANDARD VALVES ARE 10GA.
 2. CUSTOM SIZES ARE AVAILABLE.

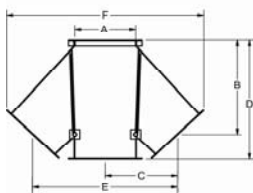
K-TYPE PAN VALVES



ALL UNITS IN INCHES					
SIZE	A	B	C	D	E
45°					
6	6 1/8	10 3/4	9 3/4	13 7/8	17
8	8 1/8	12 1/2	11 3/4	16 1/4	20 7/8
10	10 1/8	14 1/4	13 7/8	18 5/8	24 3/4
12	12 1/8	15 7/8	16	21 1/8	28 1/2
60°					
6	6 1/8	17 3/4	9 1/8	19 7/8	19 5/8
8	8 1/8	21	11 1/8	23 5/8	24 3/4
10	10 1/8	24 1/4	13 1/8	27 3/8	29 7/8
12	12 1/8	27 1/2	15 1/8	31 1/8	35 1/8

NOTE:
 1. STANDARD VALVES ARE 10GA.

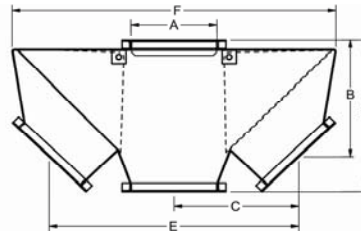
3-WAY DIVERTER VALVES



ALL UNITS IN INCHES						
SIZE	A	B	C	D	E	F
45°						
6	6 1/8	13 1/8	9 3/8	16 3/8	18 3/4	24 3/4
8	8 1/8	15 1/2	11 7/8	19 1/4	21 3/4	28 5/8
10	10 1/8	17 3/4	13 3/4	22 1/2	25 1/2	34 1/2
12	12 1/8	20 1/8	14 1/2	25 1/2	28 7/8	39 1/4
14	14 1/8	23 1/4	16 5/8	29 1/2	33 1/4	45 3/8
16	16 1/8	25 1/2	18 3/8	32 1/2	36 5/8	50 1/8
18	18 1/8	27 7/8	20 3/8	35 1/2	40	55
60°						
6	6 1/8	22 1/2	10	24 3/4	20	27 1/2
8	8 1/8	26 1/2	11 7/8	29 1/4	23 3/4	33
10	10 1/8	30 5/8	13 3/4	33 7/8	27 1/2	38 1/2
12	12 1/8	34 5/8	15 5/8	38 3/8	31 1/4	43 7/8
14	14 1/8	39 7/8	18	44 1/4	35 7/8	50 3/4
16	16 1/8	43 7/8	19 7/8	48 7/8	39 5/8	56 1/4
18	18 1/8	49	21 3/4	53 3/8	43 3/8	61 5/8

NOTE:
 1. STANDARD VALVES ARE 10GA.
 2. CUSTOM SIZES ARE AVAILABLE.

3-WAY PAN VALVES



ALL UNITS IN INCHES						
SIZE	A	B	C	D	E	F
6	6 1/8	12 1/2	11 1/4	15 1/2	22 1/2	27 3/8
8	8 1/8	14 1/4	13 3/8	18	26 3/4	33 1/2
10	10 1/8	15 7/8	15 1/2	20 3/8	31	39 5/8

NOTE:
 1. STANDARD VALVES ARE 10GA.