

# STAINLESS STEEL

## 304 STAINLESS STEEL SPOUTING

SIZE	14ga.	12ga.	10ga.
4"	★		
6"		★	
8"		★	★
10"		★	★
12"		\$42.71	★
14"			★



Call a Premier representative for sizes and gauges not listed.

## STAINLESS STEEL WELDING SLEEVES

24" LONG 12ga.



SIZE	PRICE
6"	★
8"	★
10"	★
12"	★
14"	★

## STAINLESS STEEL ELBOWS

45° includes 1 clamp band, 67½° includes 2 clamp bands



SIZE	22½°	45°	67½°
6"x10ga.	★	★	★
8"x10ga.	★	★	★
10"x10ga.	★	★	★
12"x10ga.	★	★	★
14"x10ga.	★	★	★

## STAINLESS STEEL CLAMP BANDS



SIZE	PRICE
4"	★
6"	★
8"	★
10"	★
12"	★
14"	★
16"	★
18"	★
20"	★
24"	★

## STAINLESS STEEL FLAT TOP ADAPTERS



SIZE	PRICE
4	★
6	★
8	★
10	★
12	★
14	★

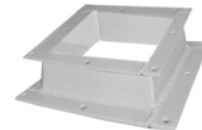
## STAINLESS STEEL ROUND ANGLE FLANGES



SIZE	PRICE
4"	★
6"	★
8"	★
10"	★
12"	★
14"	★
16"	★
18"	★
20"	★
24"	★

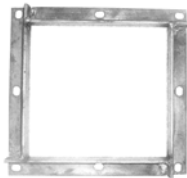
## STAINLESS STEEL SQUARE TO ROUND & SQUARE TO SQUARE TRANSITIONS

CONSTRUCTED OF 10GA. W/ PUNCHED FLANGES



SIZE	PRICE
4" to 4"	★
6" to 4"	★
6" to 8"	★
8" to 8"	★
8" to 6"	★
10" to 10"	★
10" to 8"	★
10" to 6"	★
12" to 12"	★
12" to 10"	★
12" to 8"	★
14" to 14"	★
14" to 12"	★
14" to 10"	★

## STAINLESS STEEL SQUARE ANGLE FLANGES



SIZE	PRICE
6"	★
8"	★
10"	★
12"	★
14"	★
16"	★
18"	★

## STAINLESS STEEL 45° DEAD STOPS w/ REMOVABLE END



SIZE	PRICE
6" x 10ga.	★
8" x 10ga.	★
10" x 10ga.	★
12" x 10ga.	★
14" x 10ga.	★

## STAINLESS STEEL RACK & PINION SLIDE GATES



SIZE	PRICE
6"	★
8"	★
10"	★
12"	★
14"	★
16"	★
18"	★

SEE PAGE 12 FOR ELECTRICAL AND AIR OPERATED GATE OPTIONS.

## STAINLESS STEEL ADJUSTABLE CUSHION BOXES



SIZE	PRICE
6"	★
8"	★
10"	★
12"	★
14"	★

10GA. CONSTRUCTION w/ ROUND INLET & OUTLET