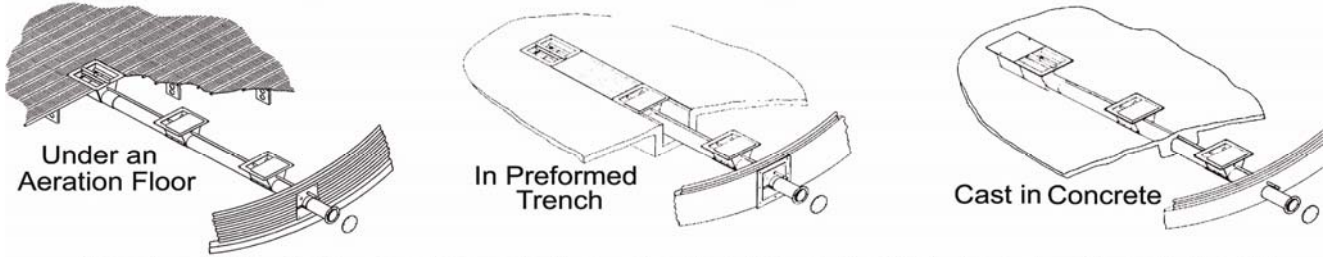


STANDARD BIN UNLOAD

The bin well with unloading tube is the first step in an automatic bin unloading system. With these installed, the system can be completed in a variety of ways at any time. The small cost makes bin wells a good investment for every bin. The illustration below pictures three ways that bin wells and unloading tubes can be installed. Different types of wells are available for various applications.



Use center well 1, 3 or 4 for bin wells cast in concrete with appropriate intermediate well. Run 1/2" pipe into center well housed in 1" conduit between the center and intermediate bin well. Run 1" pipe to the intermediate well over the 1/2" pipe going to the center well and house these in 1-1/2" conduit from the intermediate bin well to the outside wall. This will allow individual control of both bin wells in concrete installations.

Slide gates and pivot pipes are provided, as well as clamps to attach bin wells to the unloading tube (which is heavy gauge for dependable service and includes a flanged discharge end with tube cap). Also available is a bin flange with clamp. It attaches to the bin wall, covering the hole and securely holding the unloading tube in place.

BIN WELLS

REF NO.	DESCRIPTION	6"		8"		10"	
		wt. (lbs.)	PRICE	wt. (lbs.)	PRICE	wt. (lbs.)	PRICE
1	Bin Well with Half Gate	25	★	26	★		
2	Bin Well with Full Gate	26	★	26	★	49	★
	Band on Intermediate Well (Full Gate)					31	★
3	Concrete Well	44	★	44	★		
4	Shallow Center Well	21	★	27	★		
5	Shallow Intermediate Well	14	★	17	★		
6	Band-on Intermediate Well (Half Gate)	25	★	25	★		
7	Intermediate Well (For Power Sweep)	16	★	27	★	32	★
8	Intermediate Well (Full Gate)	18	★	22	★	28	★
9	Center Well w/ Pivot (Small Grain)	30	★	32	★	38	★
13	Inter. Well (Half Gate) -Bolt-on top flange	18	★	21	★	24	★

BIN WELLS WITH ROLLER SUPPORTED SLIDES

2	Center Well w/ Full Opening Gate	28	★	29	★		
2	Concrete Well	47	★	46	★		
6	Band-on Intermediate Well (Half Gate)	27	★	27	★		
10	Low Profile Center Well					65	★
11	Low Profile Intermediate Well					42	★

All available styles are illustrated below. Dimensions of Ref. 2 & 6 are the same as Ref. 1. Add 2" for outside dimensions of flanges on 6" & 8" and add 4" on 10" models. Add 6-1/2" to determine distance from center of bin well to end of unloading tube.

