

STANDARD BIN UNLOAD

POWER SWEEP AUGER

INCLUDES GALVANIZED UNLOADING TUBE.

CHOOSE BETWEEN BAND-ON STYLE OR WELDED IN PLACE INTERMEDIATE WELLS.

Each kit includes the special power sweep bin well, unloading tube, flight, transmission, bin sweep with "Kle: Sweep" shield, intermediate well(s), bin flange and control pipe ki

BASIC POWER SWEEP LESS DRIVE

Bin Diameter	# of Int. Wells	Bin Center to Unload Flange	Bin Center to Outside of Sweep Wheel	6" POWER SWEEP			8" POWER SWEEP			10" POWER SWEEP		
				*HP	Weight	Price	*HP	Weight	Price	*HP	Weight	Price
15'	1	9'-4.75"	6'-11"	3	300	★	3	351	★			
18'	1	11'-4.75"	8'-5"	3	313	★	3	379	★			
21'	2	12'-4.75"	9'-10.75"	3	355	★	5	422	★			
24'	2	13'-10.75"	11'-4.75"	3	379	★	5	449	★	7.5	615	★
27'	2	15'-4.75"	12'-10.75"	5	393	★	5	476	★	7.5	678	★
30'	2	16'-10.75"	14'-4.75"	5	415	★	5	502	★	7.5	726	★
33'	3	18'-10.75"	15'-10.75"	5	454	★	5	554	★	7.5	789	★
36'	3	19'-10.75"	17'-4.75"	5	480	★	7.5	577	★	10	837	★
39'	3	21'-4.75"	18'-10.75"	5	500	★	7.5	596	★	10	885	★
42'	4	23'-4.75"	20'-4.5"	5	536	★	7.5	638	★	10	948	★
48'	4	26'-4.75"	23'-4.5"	7.5	613	★	7.5	730	★	10	1044	★

For 6" or 8" intermediate wells with roller supported gates, add per well: ★

6" POWER SWEEP: Sweep Flight: 5" O.D. x 11 ga. Flight on 1.25" O.D. Tube. Unload Flight: 5" O.D. x 11 ga. Flight on 1.9" O.D. Tube. Unload Tube: 16 ga. Galvanized

8" POWER SWEEP: Sweep Flight: 7" O.D. x 7ga. Flight on 1.9" O.D. Tube. Unload Flight: 7" O.D. x 7ga. Flight on 1.9" O.D. Tube. Unload Tube: 14 ga. Galvanized

10" POWER SWEEP: Sweep Flight: 7" O.D. x 7ga. Flight on 1.9" O.D. Tube. Unload Flight: 9" O.D. x 7ga. Flight on 2.375" O.D. Tube. Unload Tube - 12 ga. Galvanized

*Horsepower ratings are adequate for use with standard horizontal power head units only

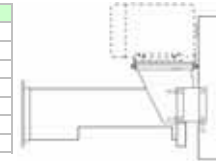
POWER SWEEP POWER HEADS

These units attach to the basic power sweep with a flange connection and a round drive stub for the flight. Choose from drive listed below or from drives listed on previous pages.

HORIZONTAL POWER HEAD

The lengths of the horizontal power heads are: 6" Model is 16", 8" Model is 24", 10" Model is 30". Distances from tube flange to center of discharge are: 6" Model is 10", 8" Model is 14 3/4", 10" Model is 18 3/4". No additional power required over what has been recommended for drives previously.

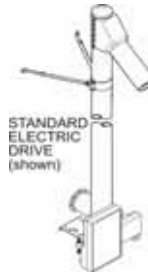
DESCRIPTION	HP (max)	Wt.	Price	Ext. \$/ft.
6" Horizontal Power Head (2-B Drive) use 3.5" O.D. Motor Sheave	5	49	★	★
8" Horizontal Power Head (2-B Drive) use 4.0" O.D. Motor Sheave	7.5	86	★	★
8" Horizontal Power Head (3-B Drive) use 4.0" O.D. Motor Sheave	15	91	★	★
10" Horizontal Power Head (2-B Drive) use 4.6" P.D. Motor Sheave	10	118	★	★
10" Horizontal Power Head (3-B Drive) use 4.6" P.D. Motor Sheave	15	25	★	★
10" Horizontal Power Head (2-B Drive) use 4.6" P.D. Motor Sheave	10	150	★	★
10" Horizontal Power Head (3-B Drive) use 4.6" P.D. Motor Sheave	15	165	★	★



VERTICAL POWER HEAD

One long mounting bracket is furnished with this unit. Add these HP requirements to those of basic power sweeps.

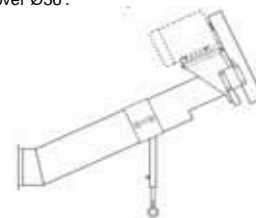
Size	Motor Sheave	HP	Weight	Price
6"	4.5" O.D.	3	237	★
8"	4.5" O.D.	5	364	★
10"	4.0" O.D.	7.5	506	★



25° POWER HEAD

Add these power requirements to those listed for basic power sweeps. Not to be used on bins over Ø36'.

DESCRIPTION	HP	WT.	PRICE	Ext. \$/ft.
6" to 8" 25° Power Head (2-B Drive)	1	127	★	★
8" to 10" 25° Power Head (2-B Drive)	2	175	★	★
8" to 10" 25° Power Head (3-B Drive)	2	174	★	★
10" to 12" 25° Power Head (2-B Drive)	3	215	★	★
10" to 12" 25° Power Head (3-B Drive)	3	222	★	★
10" to 12" 25° Power Head 3:1 Chain Reducer 2B	3	255	★	★
10" to 12" 25° Power Head 3:1 Chain Reducer 3B	3	262	★	★



ACCESSORIES

For converting standard horizontal bin unloaders, vertical bin unloaders and 25° unloaders with power sweeps manufactured prior to 2007

DESCRIPTION	USE	PRICE
Stub 1.25" round. to 1" square x 8.5" long	8" Horizontal or Vertical to 6" or 8" Sweep:	★
Stub 1.25" round. to 1" square	8" 25° Unloader to 6" or 8" Sweep:	★
Stub 1.5" round to 1.25" square x 8.5" long	10" Horizontal or Vertical to 10" Sweep:	★
Stub 1.25" round to 1.5" round to 1.25" square	10" 25° Unloader to 10" Sweep:	★
Stub 1.25" round to 1" square x 8.5" long	10" Horizontal or Vertical to 8" Sweep:	★
Stub 1.5" round to 1" square	10" 25° Unloader to 8" Sweep:	★
Stub 1" round to 1" square	6" Lowboy to 6" Sweep:	★
Stub 1.5" round to 2" round to 1.25" square	12" 25° Unloader to 10" Sweep:	★
Adapter Plate: 6" to 8"		★
Adapter Plate: 8" to 10"		★
Adapter Plate: 10" to 12"		★
Stub - 1.5" round to 1.25" round		★
Stub - 1.25" round to 1" round		★