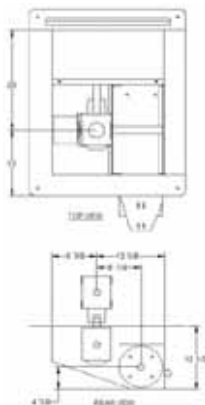


COMMERCIAL BIN UNLOAD



8" HEAVY DUTY POWER SWEEP KITS

Utilizes 7" O.D. x 7ga. sweep flight on 1-7/8" tube. 7" O.D. x 1/4" unload flight on 1-7/8" tube. Includes heavy duty double gearbox and clutch. Each kit includes unloading tube, unloading flight, center well, intermediate wells, rack & pinion controlled well gates, control pipes for well gates, sweep flight with back shields, sweep carrier (48' & larger bins), and reduction drive sweep end wheel.

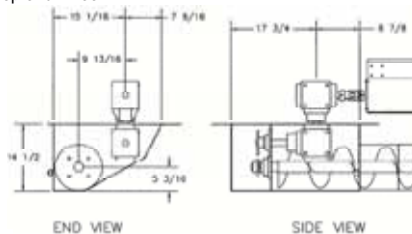
Bin Dia.	# Int. Wells	HP	Weight	Price
42'	4	10	932	★
48'	4	10	1,045	★
54'	4	10	1,120	★
60'	5	15	1,255	★
72'	6	15	1,465	★
75'	6	15	1,505	★
78'	6	15	1,541	★



10" HEAVY DUTY POWER SWEEP KITS

Utilizes 9 3/8" O.D. x 1/4" sweep flight on 2-7/8" tube. 9" O.D. x 1/4" unload flight on 2-3/8" tube. Larger step drive gearbox with No. 60 R.C. Drive. Square stub at center well for attachment to unload auger. Each kit includes unloading tube, unloading flight, center well, intermediate wells, rack & pinion controlled well gates, control pipes for well gates, sweep flight with back shields, sweep carrier (48' & larger bins), and reduction drive sweep end wheel.

Bin Dia.	# Int. Wells	HP	Weight	Price
42'	4	15	1,285	★
48'	4	15	1,440	★
54'	4	15	1,545	★
60'	5	15	1,730	★
72'	6	20	2,020	★
75'	6	20	2,075	★
78'	6	20	2,125	★



COMMERCIAL POWER SWEEPS FOR GRAIN PUMPS AND OTHER UNLOADING SYSTEMS

Commercial Power Sweeps may be adapted to grain pump loops, auger unloaders, u-trough, en masse, drag conveyors or other special applications. The standard sweep unit drive is separate from the rest of the unit and is 90° to the unloader. When grain will no longer unload through the center and intermediate wells, the separate Power Sweep drive motor is started and operates on a 1" solid drive shaft with 1" bearings in a 6" tube. The sweep and back shield are supplied in sections. Center portion of sweep to be used prior to adding subsequent sections until the entire sweep has been assembled and the bin unloader. Commercial Power Sweeps should not be installed in concrete unless troughs or tunnels are used for the drive and the unloading components. One Sweep carrier assembly is standard with all units of 48' and larger.

Each Commercial Power Sweep consists of a center well, intermediate wells, sweep, sweep drive, well gate controls and reduction sweep wheel. Specify one of the following unload systems: tube type, u-trough or mass-ter mover. * Auger unloaders require a tube cap.

600 SERIES FOR 6" TUBE TYPE UNLOADER

Bin Dia.	# Int. Wells	HP	Weight	Price
36'	3	3	942	★
42'	4	3	1,061	★
48'	4	5	1,151	★
54'	4	5	1,212	★
60'	5	5	1,303	★

800 SERIES FOR 8" TUBE TYPE UNLOADER

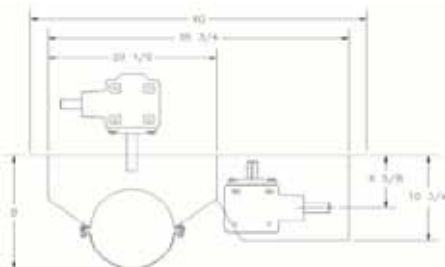
Bin Dia.	# Int. Wells	HP	Weight	Price
36'	3	5	1,102	★
42'	4	5	1,289	★
48'	4	7.5	1,336	★
54'	4	7.5	1,402	★
60'	5	7.5	1,605	★

1000 SERIES FOR 10" TUBE TYPE UNLOADER

Bin Dia.	# Int. Wells	HP	Weight	Price
36'	3	5	999	★
42'	4	5	1,102	★
48'	4	7.5	1,316	★
54'	4	7.5	1,411	★
60'	5	7.5	1,506	★
72'	6	10	1,851	★
75'	6	10	1,950	★

1200 SERIES FOR 12" TUBE TYPE UNLOADER

Bin Dia.	# Int. Wells	HP	Weight	Price
36'	3	5	1,031	★
42'	4	5	1,132	★
48'	4	7.5	1,348	★
54'	4	7.5	1,443	★
60'	5	7.5	1,538	★
72'	6	10	1,883	★
75'	6	10	1,982	★



TUBE CAPS FOR AUGER UNLOADER

TUBE SIZE	WEIGHT	PRICE
6"	5	★
8"	6	★
10"	8	★
12"	14	★

UNLOADING DIAMETER	B
6"	10.5
8"	12.5
10"	14.5
12"	16.5