

PAN VALVES AND DRIVES



45° Y-TYPE

SIZE	CONFIGURATION	10ga.	7ga.
6"	Painted Sq in/out	★	★
	Galvanized Sq in/out	★	★
	Painted Rd in/out	★	★
	Galvanized Rd in/out	★	★
8"	Painted Sq in/out	★	★
	Galvanized Sq in/out	★	★
	Painted Rd in/out	★	★
	Galvanized Rd in/out	★	★
10"	Painted Sq in/out	★	★
	Galvanized Sq in/out	★	★
	Painted Rd in/out	★	★
	Galvanized Rd in/out	★	★
12"	Painted Sq in/out	★	★
	Galvanized Sq in/out	★	★
	Painted Rd in/out	★	★
	Galvanized Rd in/out	★	★



45° K-TYPE

SIZE	CONFIGURATION	10ga.	7ga.
6"	Painted Sq in/out	★	★
	Galvanized Sq in/out	★	★
	Painted Rd in/out	★	★
	Galvanized Rd in/out	★	★
8"	Painted Sq in/out	★	★
	Galvanized Sq in/out	★	★
	Painted Rd in/out	★	★
	Galvanized Rd in/out	★	★
10"	Painted Sq in/out	★	★
	Galvanized Sq in/out	★	★
	Painted Rd in/out	★	★
	Galvanized Rd in/out	★	★
12"	Painted Sq in/out	★	★
	Galvanized Sq in/out	★	★
	Painted Rd in/out	★	★
	Galvanized Rd in/out	★	★



45° 3-WAY TYPE*

SIZE	CONFIGURATION	10ga.	7ga.
6"	Painted Sq in/out	★	★
	Galvanized Sq in/out	★	★
	Painted Rd in/out	★	★
	Galvanized Rd in/out	★	★
8"	Painted Sq in/out	★	★
	Galvanized Sq in/out	★	★
	Painted Rd in/out	★	★
	Galvanized Rd in/out	★	★
10"	Painted Sq in/out	★	★
	Galvanized Sq in/out	★	★
	Painted Rd in/out	★	★
	Galvanized Rd in/out	★	★

60° Y-TYPE

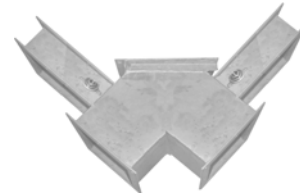
SIZE	CONFIGURATION	10ga.	7ga.
6"	Painted Sq in/out	★	★
	Galvanized Sq in/out	★	★
	Painted Rd in/out	★	★
	Galvanized Rd in/out	★	★
8"	Painted Sq in/out	★	★
	Galvanized Sq in/out	★	★
	Painted Rd in/out	★	★
	Galvanized Rd in/out	★	★
10"	Painted Sq in/out	★	★
	Galvanized Sq in/out	★	★
	Painted Rd in/out	★	★
	Galvanized Rd in/out	★	★
12"	Painted Sq in/out	★	★
	Galvanized Sq in/out	★	★
	Painted Rd in/out	★	★
	Galvanized Rd in/out	★	★

60° K-TYPE

SIZE	CONFIGURATION	10ga.	7ga.
6"	Painted Sq in/out	★	★
	Galvanized Sq in/out	★	★
	Painted Rd in/out	★	★
	Galvanized Rd in/out	★	★
8"	Painted Sq in/out	★	★
	Galvanized Sq in/out	★	★
	Painted Rd in/out	★	★
	Galvanized Rd in/out	★	★
10"	Painted Sq in/out	★	★
	Galvanized Sq in/out	★	★
	Painted Rd in/out	★	★
	Galvanized Rd in/out	★	★
12"	Painted Sq in/out	★	★
	Galvanized Sq in/out	★	★
	Painted Rd in/out	★	★
	Galvanized Rd in/out	★	★

GATE VALVES

SIZE	CONFIGURATION	10ga.	7ga.	SIZE	CONFIGURATION	10ga.	7ga.
14"	Painted Sq in/out	★	★	18"	Painted Sq in/out	★	★
	Galvanized Sq in/out	★	★		Galvanized Sq in/out	★	★
	Painted Rd in/out	★	★	20"	Painted Sq in/out	★	★
Galvanized Rd in/out	★	★	Galvanized Sq in/out		★	★	
16"	Painted Sq in/out	★	★	24"	Painted Sq in/out	★	★
	Galvanized Sq in/out	★	★		Galvanized Sq in/out	★	★
	Painted Rd in/out	★	★				
Galvanized Rd in/out	★	★					

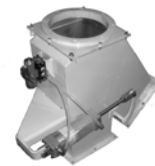


ADD 25% TO PRICE FOR URETHANE LINER. CONTACT PREMIER FOR STAINLESS STEEL PRICING.
SEE PAGE 10 FOR DIMENSIONAL INFORMATION.

FACTORY MOUNTED POWER DRIVES

ELECTRONIC ACTUATED DRIVES

	PRICE ADDER
Duff-Norton Electronic drive w/ built in limit switches, 1PH, Weather tight NEMA 4	★
Andco 3100 Electronic drive w/ built in limit switches, 1PH, Weather tight & EX-Proof NEMA 4 & NEMA 9	★
Andco 3100 Electronic drive w/ built in limit switches, 3PH, Weather tight & EX-Proof NEMA 4 & NEMA 9	★



AIR ACTUATED DRIVES

AIR CYLINDER	2-1/2" Bore x 6" Stroke (Required for air)	PRICE ADDER
SINGLE SOLENOID VALVE	WEATHER TIGHT NEMA 4	★
	EXPLOSION PROOF NEMA 9	★
DOUBLE SOLENOID VALVE	WEATHER TIGHT NEMA 4	★
	EXPLOSION PROOF NEMA 9	★
LIMIT SWITCH POSITION INDICATION	WEATHER TIGHT NEMA 4	★
	EXPLOSION PROOF NEMA 9	★

***3 WAY VALVES REQUIRE TWO DRIVES!**
(LIMIT SWITCHES ARE OPTIONAL)

ADD PRICE OF VALVE TO AIR CYLINDER(S) AND SELECTED SOLENOID VALVE(S) FOR TOTAL COST.

***3 WAY VALVES REQUIRE TWO DRIVES**
ADD PRICE OF VALVE TO COST OF SELECTED DRIVE(S) FOR TOTAL COST.